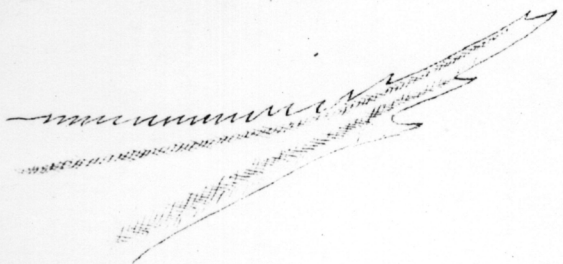
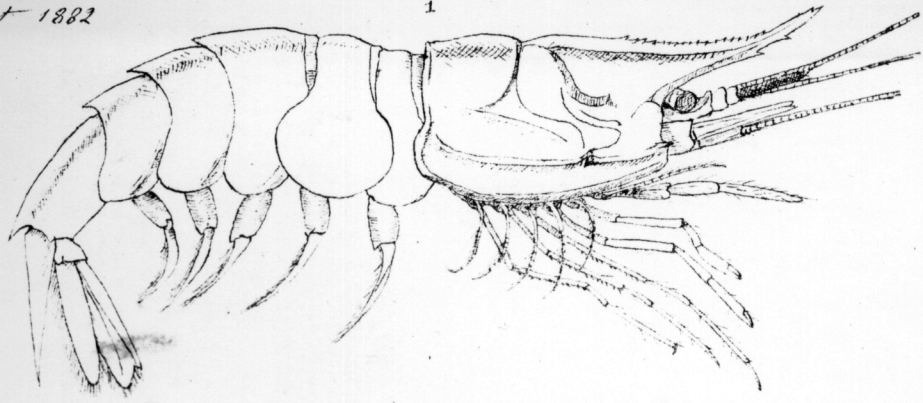


Notostomus corallinus. (A.M. Edw.)

d. du Travailleur
juillet 1882

$\frac{2}{1}$

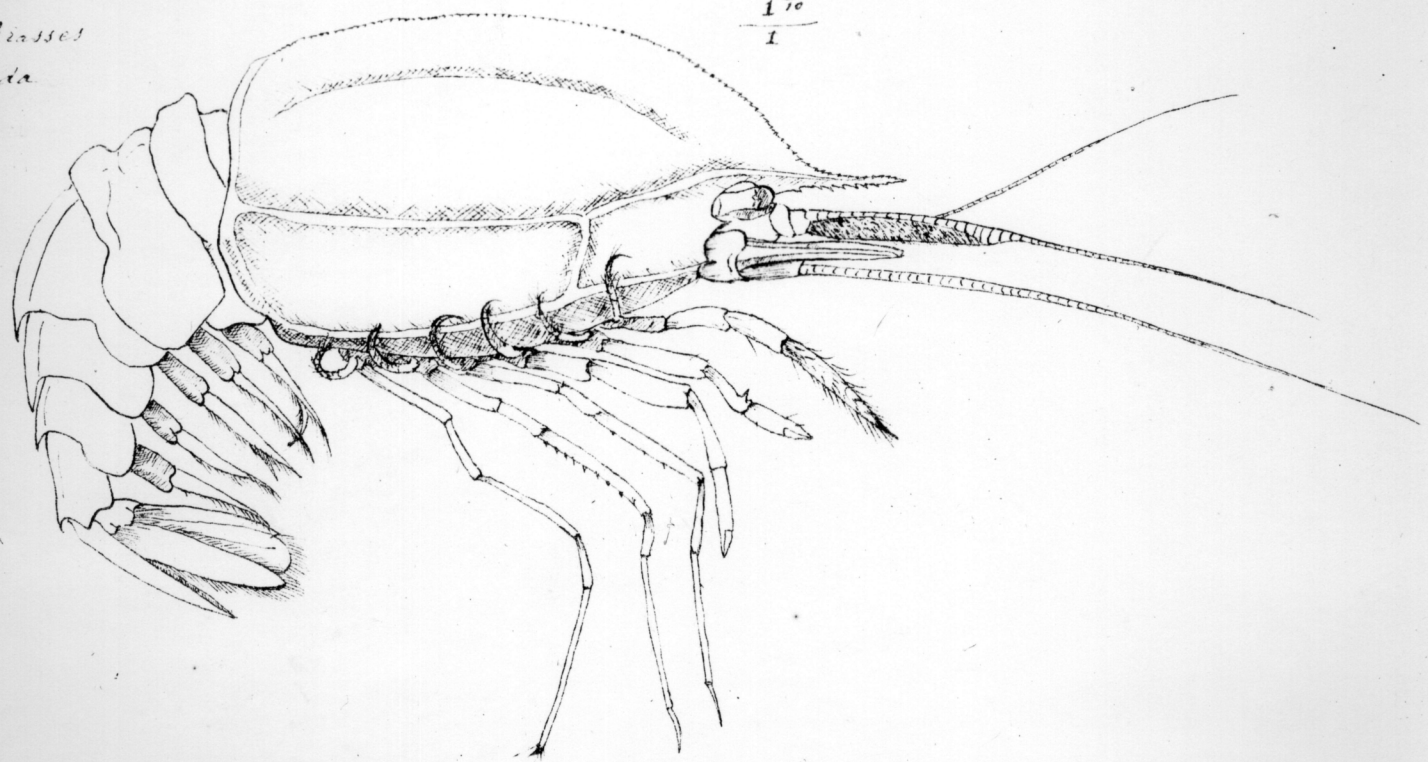
Dragage 20.
Profondeur 2080 m.

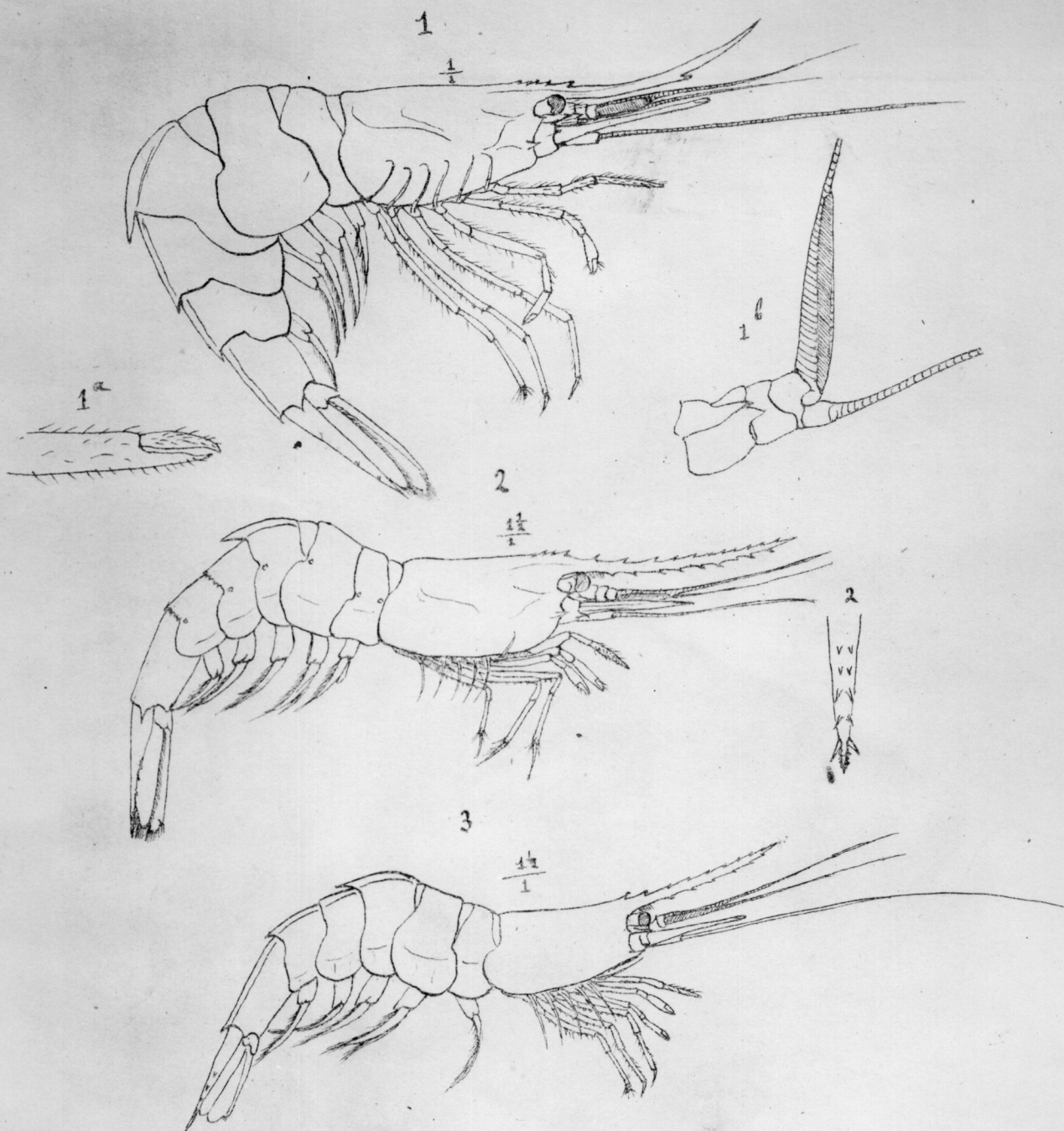


Notostomus gibbosus (A.M.E.)

d. du Blake.
Basses
Inda

$\frac{1\frac{1}{2}}{1}$





1. *AcanthePHYra armata* (A.M.E.) Antilles.
 2. *AcanthePHYra debilis* (A.M.E.) Var. *Europaea* = *Miersia gracilis* (Smith)
 3. *AcanthePHYra purpurea* (A.M.E.) Atlantique - 2000 metres.