

Zweite

Buchholz, R. 1874

Deutsche Nordpolarfahrt 1874

vol. 2. 8. Crustacea

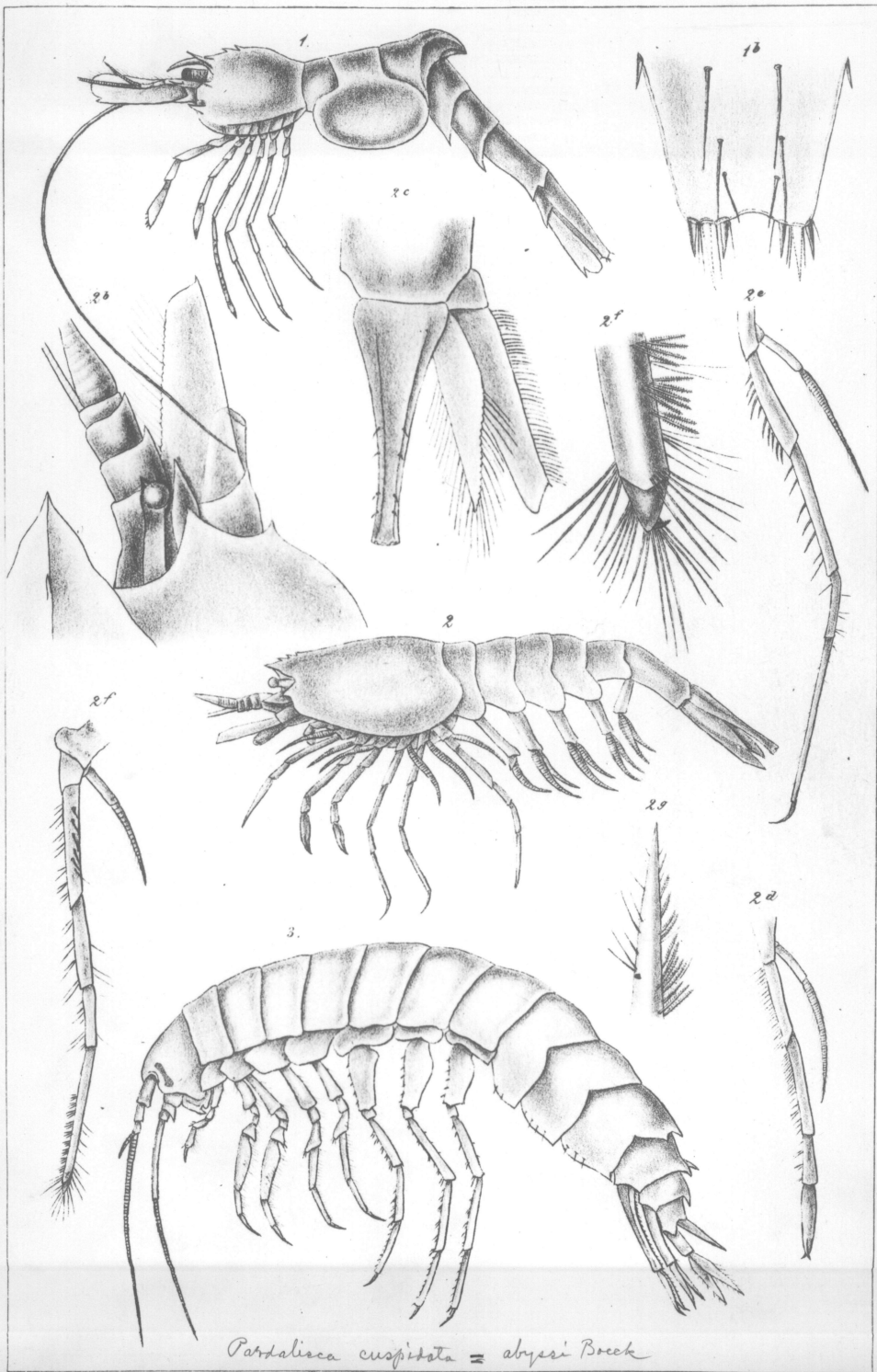
Plates

plates 1-15

Buchholz

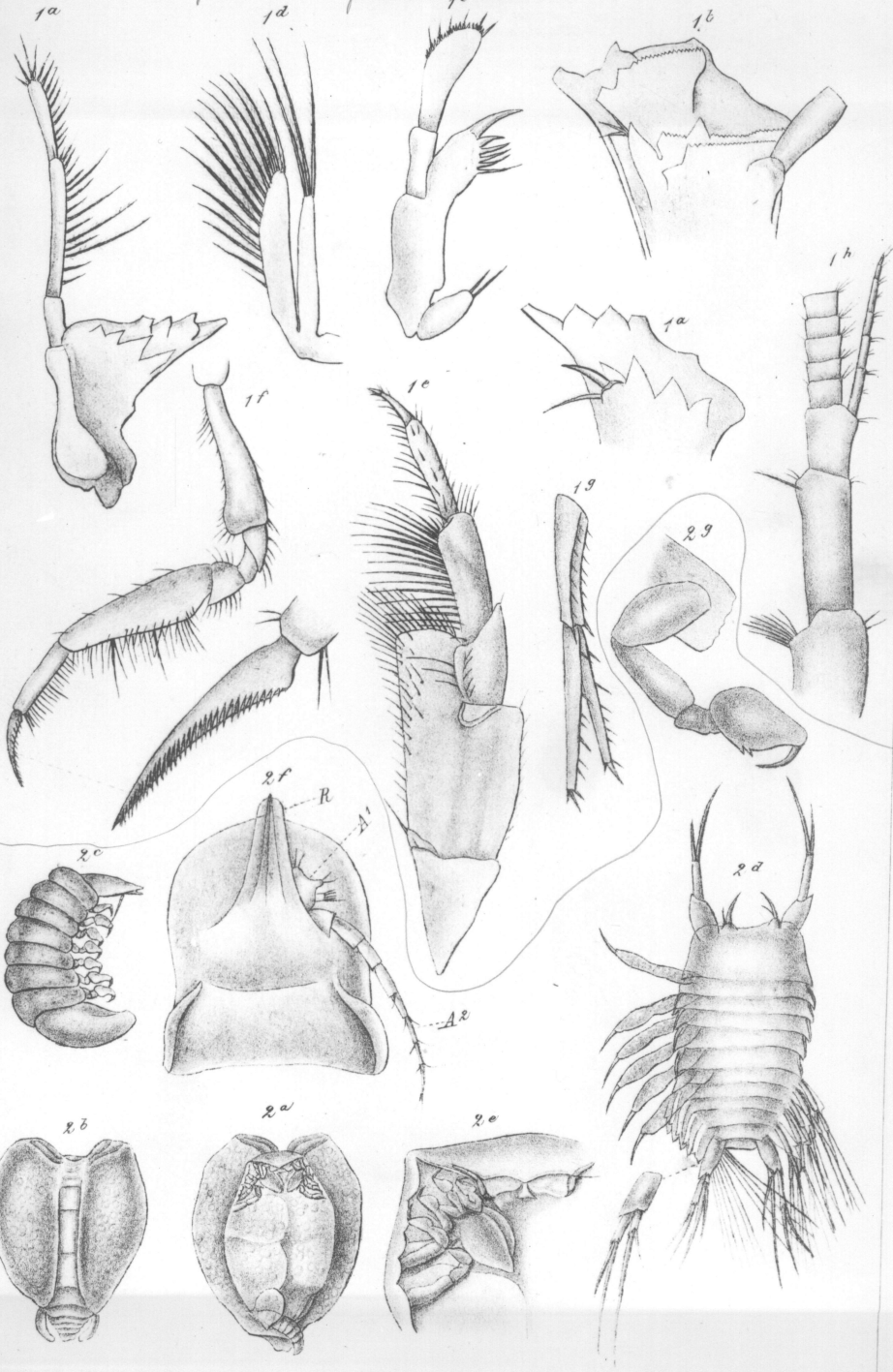
full title on back of Pl. I.

LIBRARY  
Division of Crustacea

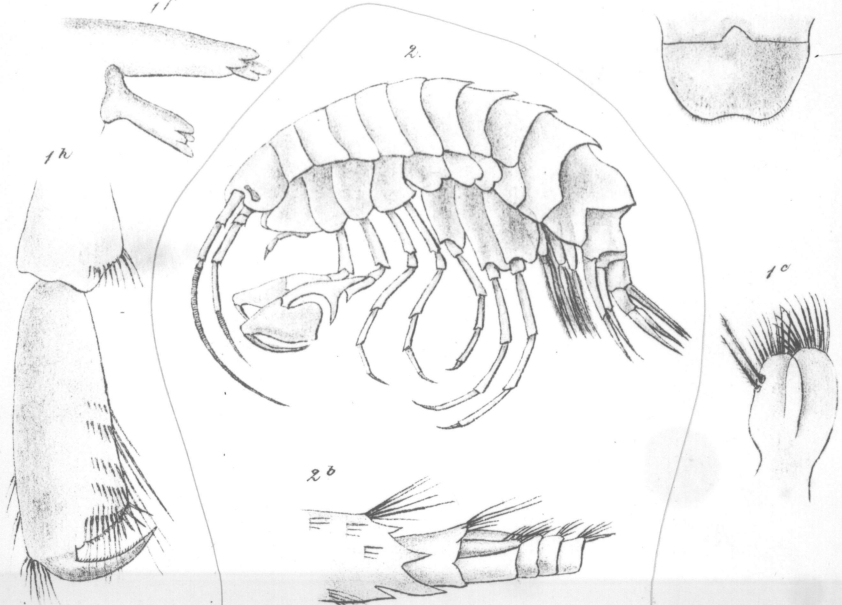
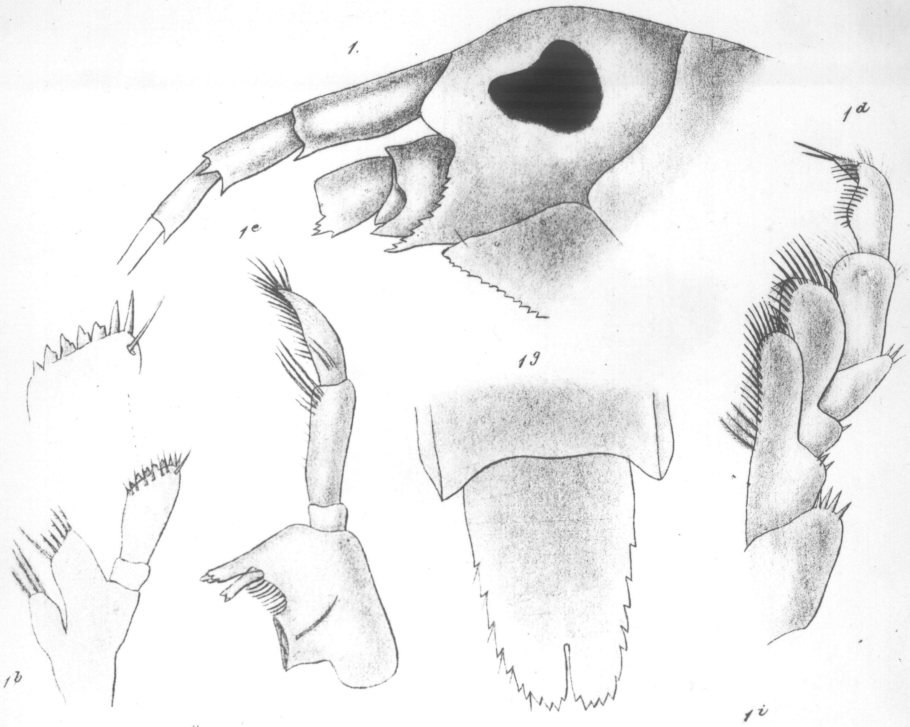


*Paradisaica cuspidata* = *abyssi* Boeck

*Pandalisca cuspidata* = *atypici* Boeck

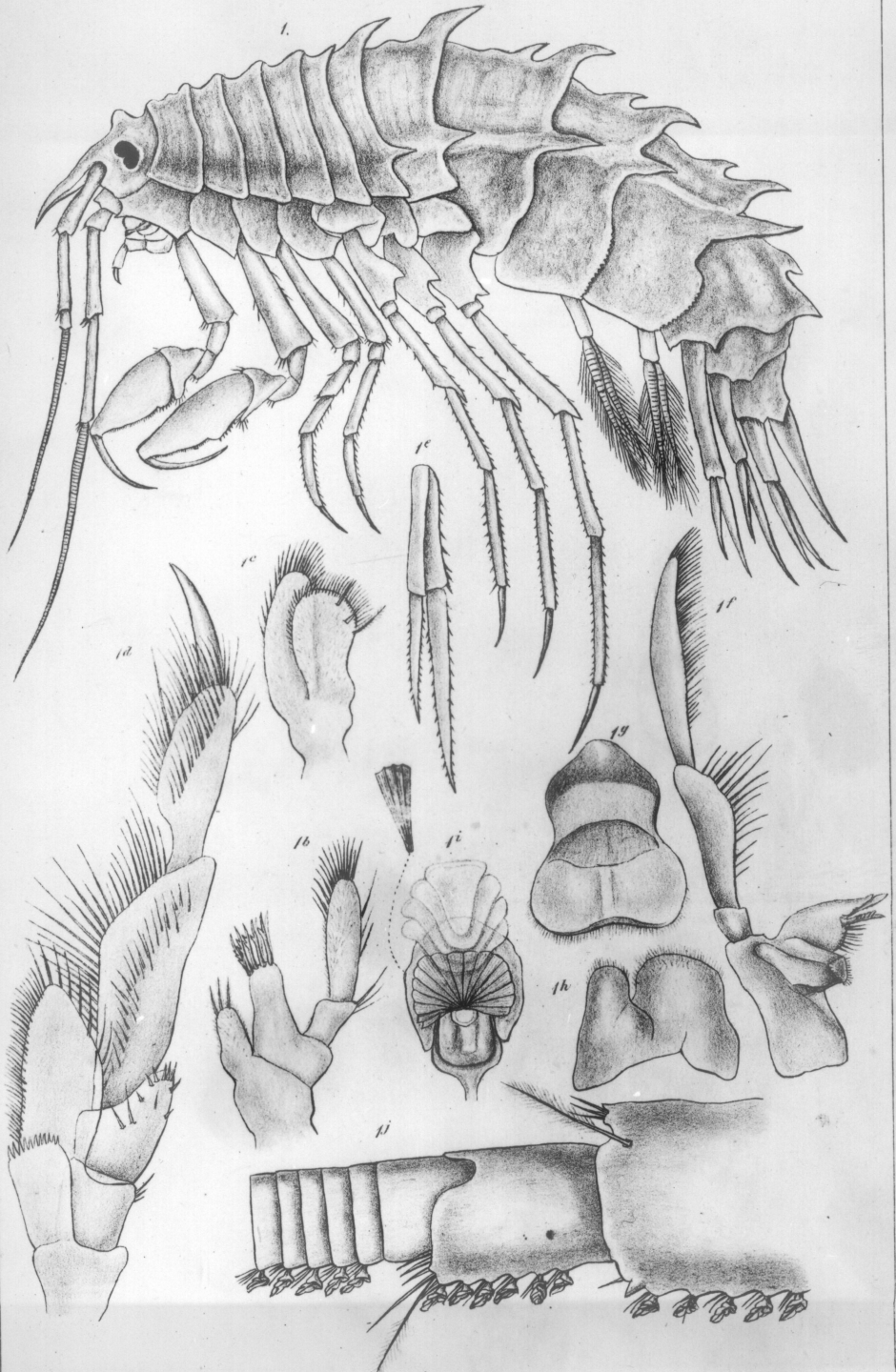


*Trotropis fragilis*

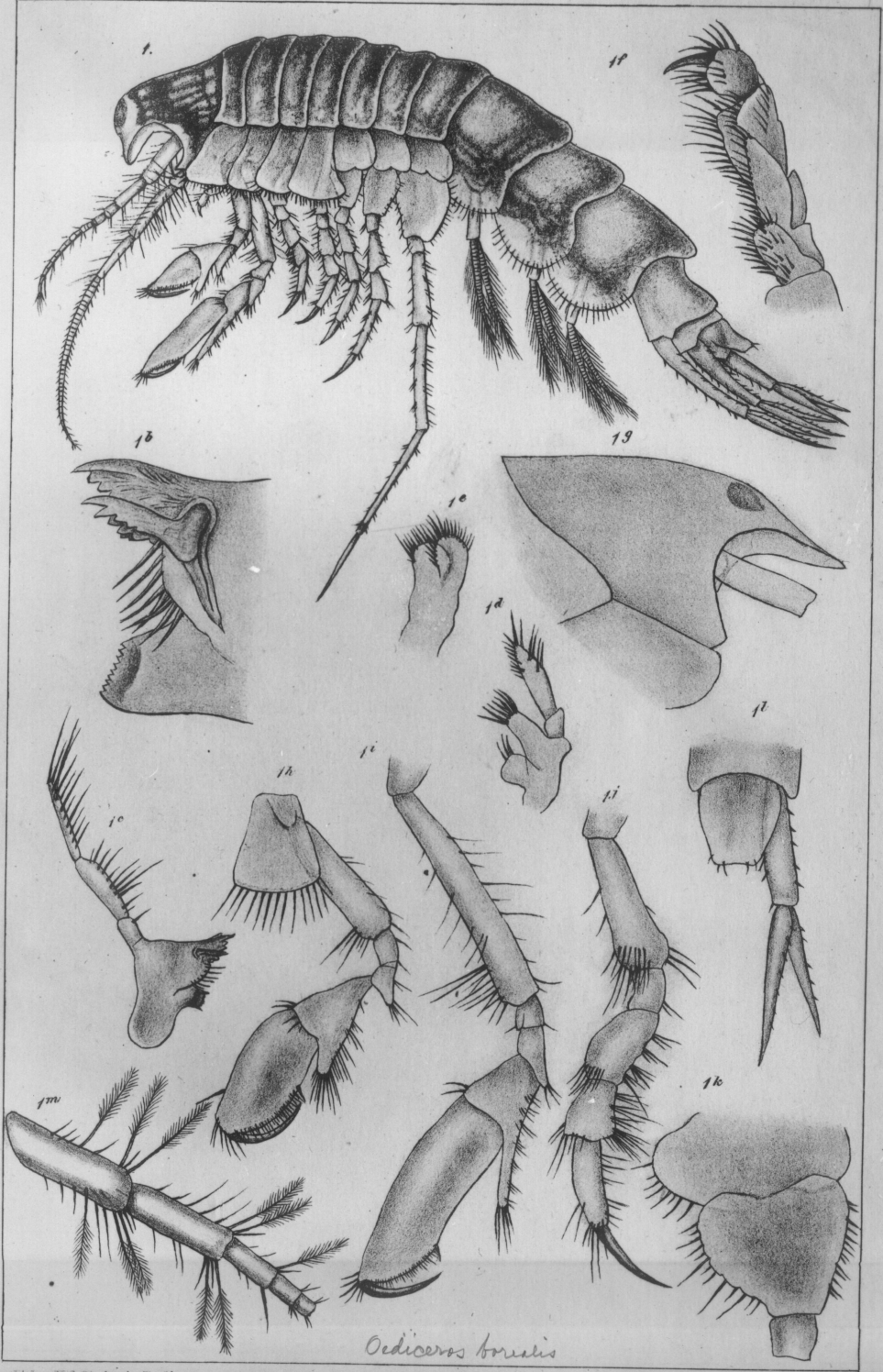


*Eusirus cuspidatus*



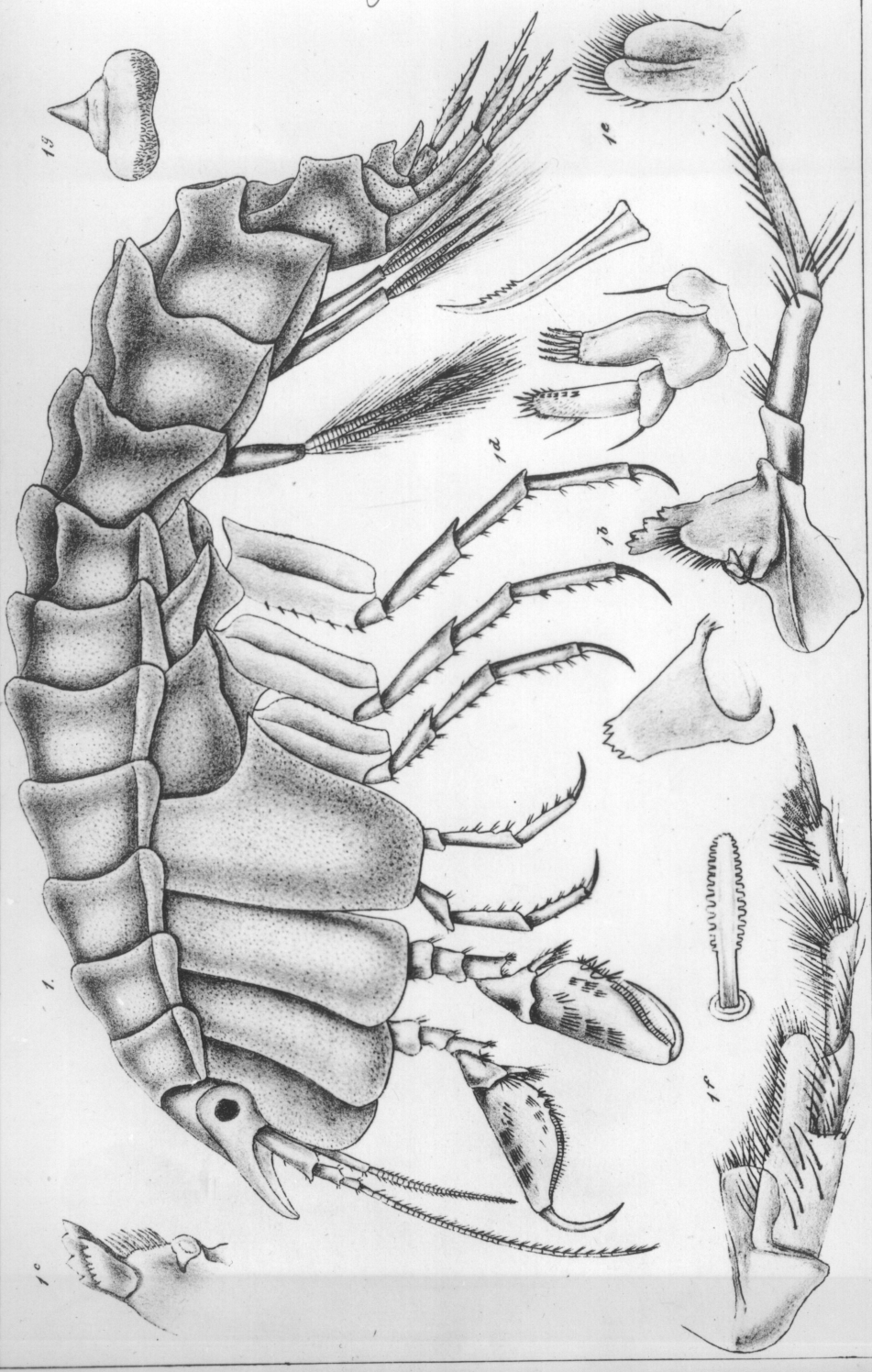


*Amphithonotus aculeatus* = *Rachotrogis macropus* Sars



*Oedicerus borealis*

*Fig. 17m. Antenna in detail.*



*Pleustes panoplus.*

*Abb. v. H. Schmidt u. Först.*



1. *Parapleustes gracilis*. 2. *Oedicerus lynceus*.

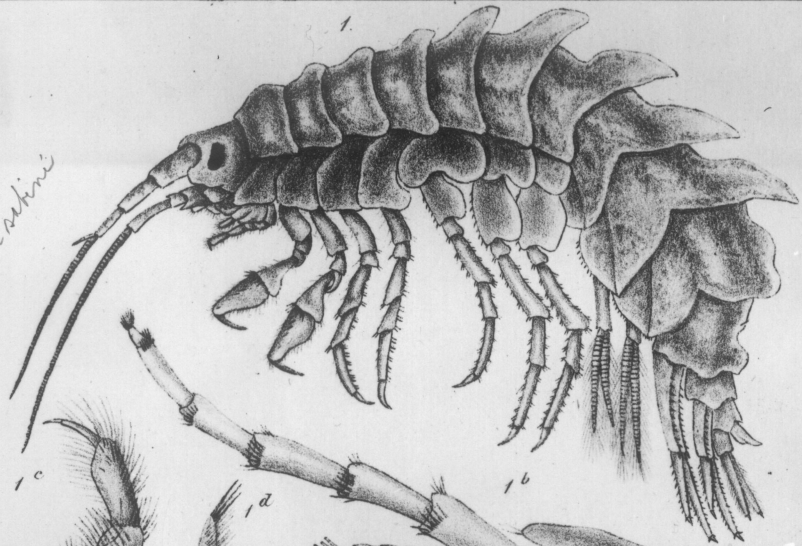
*Oedicerus lynceus*

Lith. v. J. Pröbster. v. Forster.

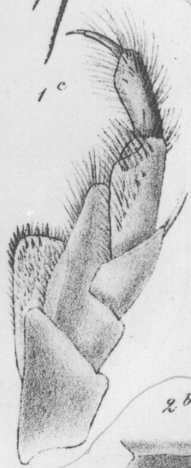


*Amathilla setini*

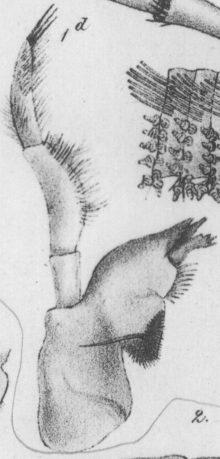
1.



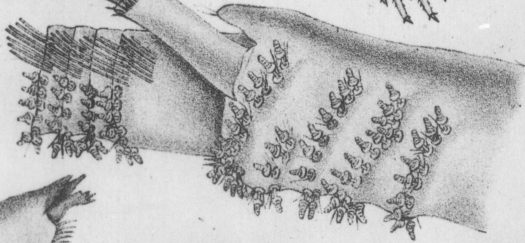
1c



1a



1b



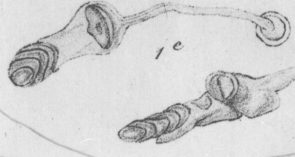
2b



2c



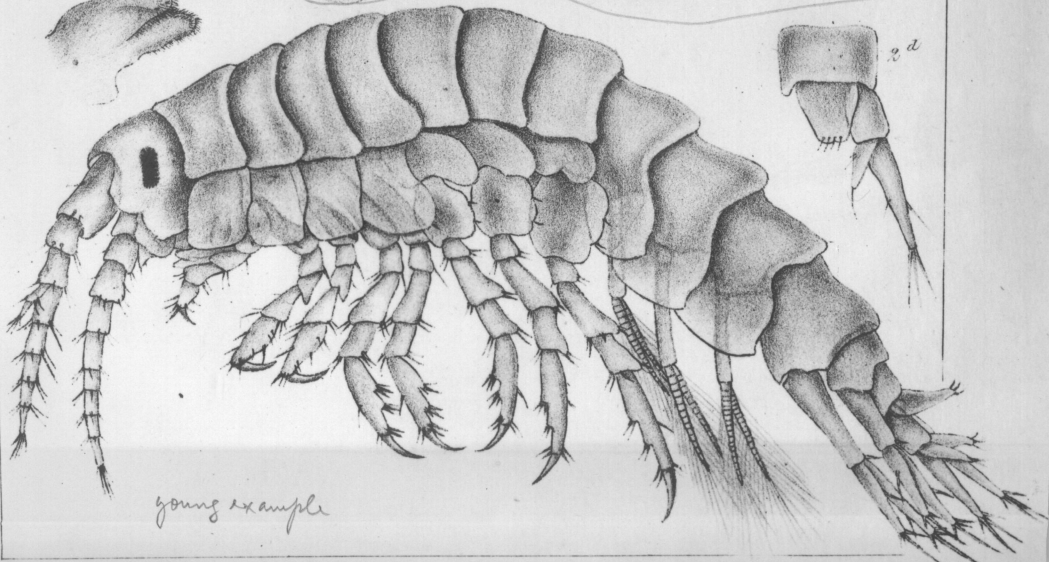
2.



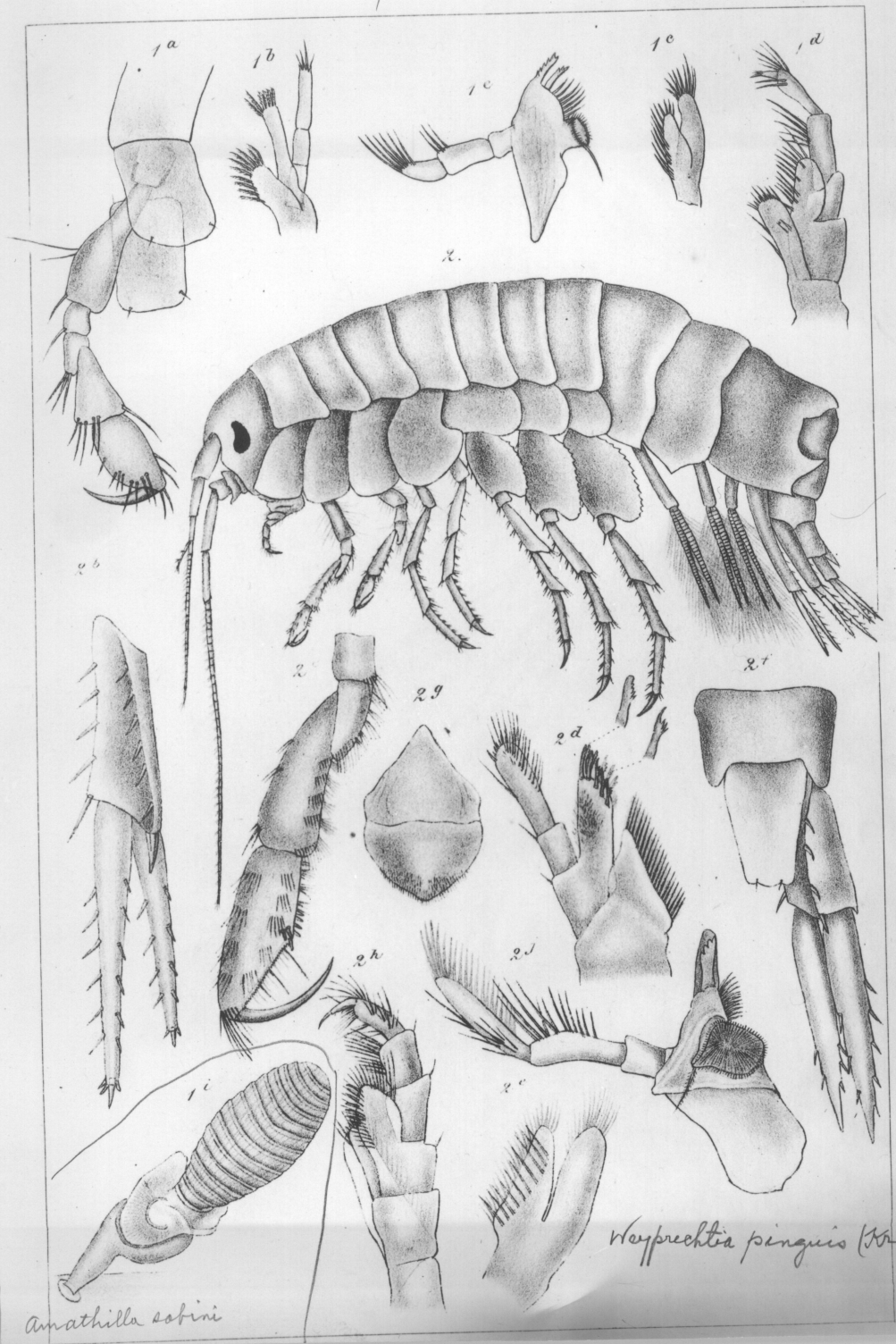
1e



2d

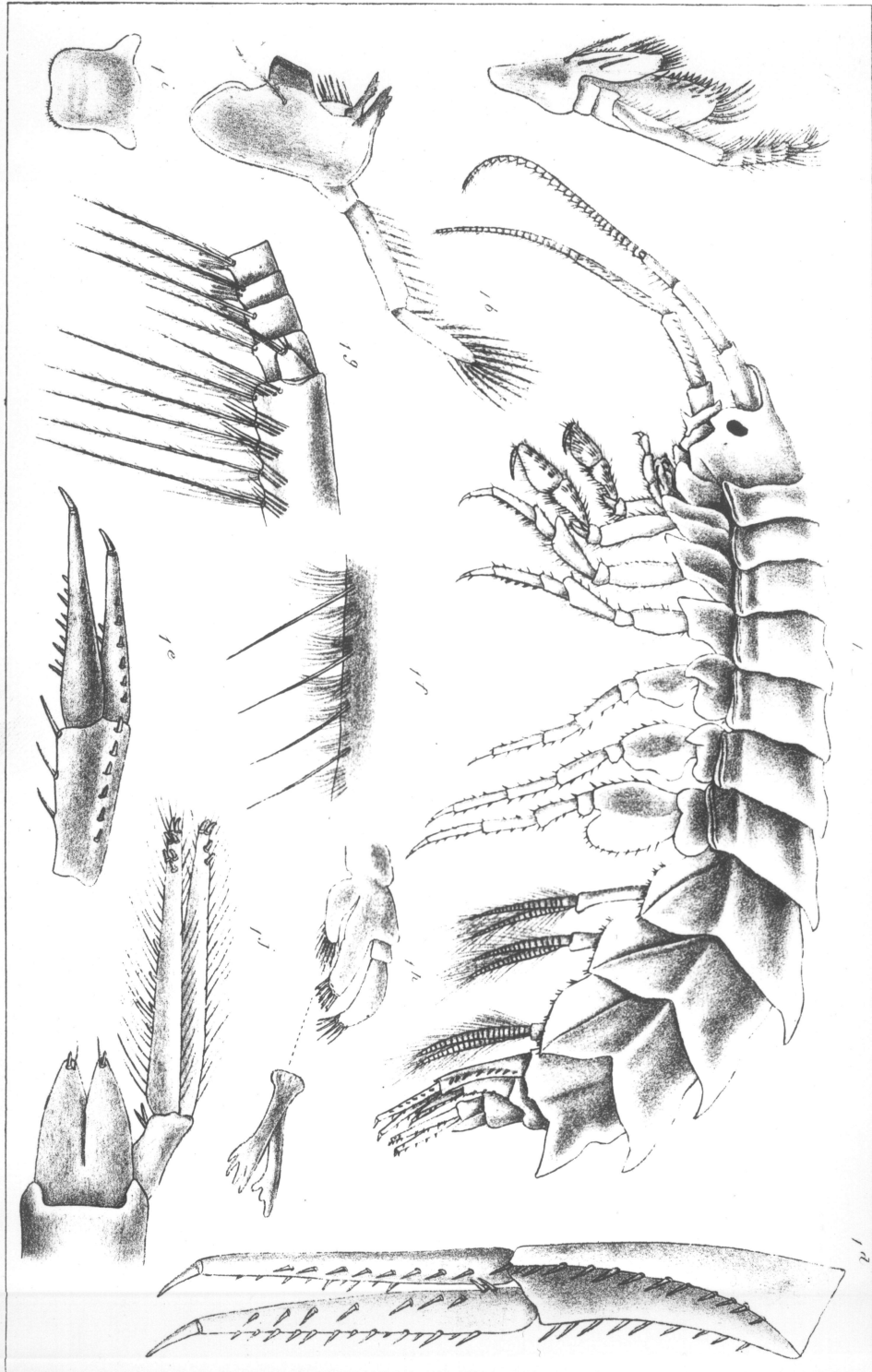


young example



*Amathilla sebini*

*Weyprechtia pinguis* (Kr.)

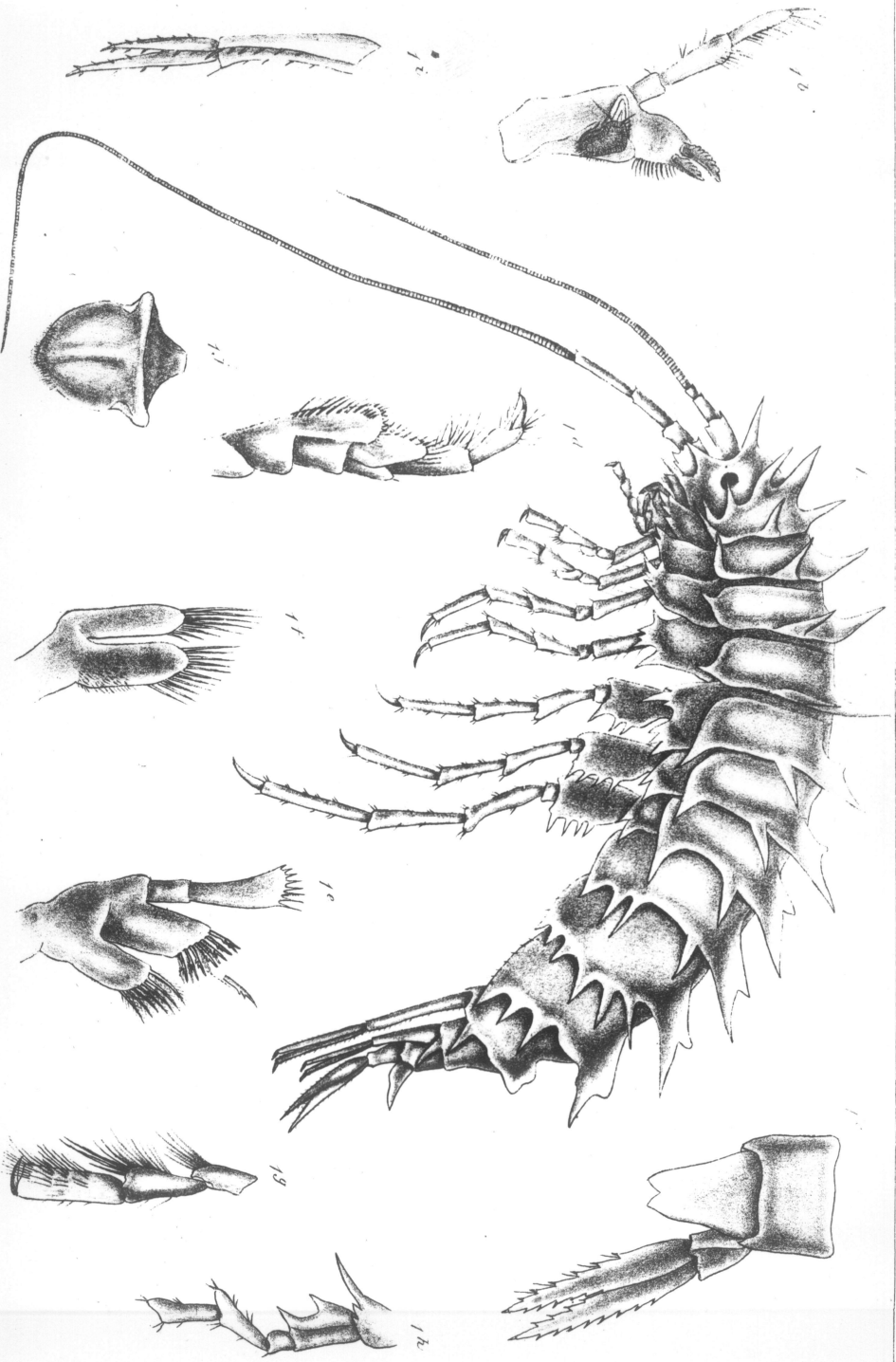


*Atylus carinatus*.

10

10

10



*Leucithorax hystrix* = *Panopliae hystrix* (Poh.)

Leucithorax hystrix (Poh.)

==

==